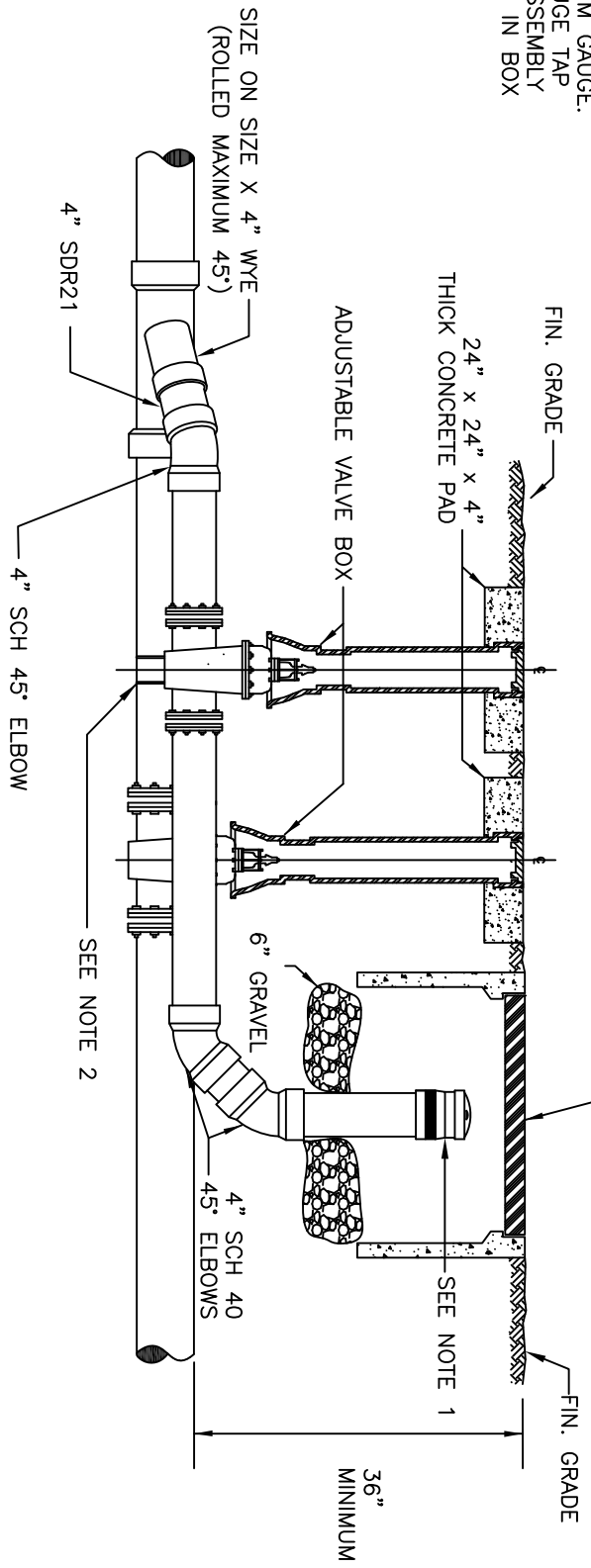


NOTES:
 1) 4" CAMLOCK BRASS MALE ADAPTER-TYPE F WITH 4" CAP-TYPE DC.

2) DOUBLE STRAP BRASS SADDLE WITH 1" CORP STOP FOR VACUUM GAUGE. SEE VACUUM GAUGE TAP DETAIL. GAUGE ASSEMBLY TO BE INSTALLED IN BOX WITH CAMLOCK.



LAST REVISION	FEB. 2022
CHECKED	MM
APPROVED	KRL

VACUUM MAIN CLEANOUT DETAIL
NOT IN PAVEMENT



ENGLEWOOD WATER DISTRICT
 201 SELMA AVENUE
 ENGLEWOOD, FLORIDA 34223